



Bathing establishment Fact Sheet

Bathhouse name	Paradisino Beach Club
Address	Via della Principessa 26
City	San Vincenzo (Li)
Contacts	Tel. +39 0565705132
Website	www.paradisino.com

TESTED BY: [Handy Superabile - Social Promotion Association](#) in summer 2023

Please note The following information refers to the verification date shown at the bottom of each card. **The Association** is not responsible for any significant changes made by the property after the visit.

Summary

Bathing establishment Fact Sheet.....	1
Arrival at the facility	2
Private/public parking.....	2
Pathway from the parking lot to the main entrance	2
Reception.....	3
Bar/restaurant	4
Internal Pathways and common services.....	5
Internal Pathways.....	5
Toilet and shower accessible to guests with reduced mobility.....	6
Changing room and closed shower	8
Beach.....	8
Children's play area.....	9
Swimming pool.....	9
Doctors' Offices/Healthcare Facilities.....	9

Project carried out with the contribution of the





Arrival at the facility

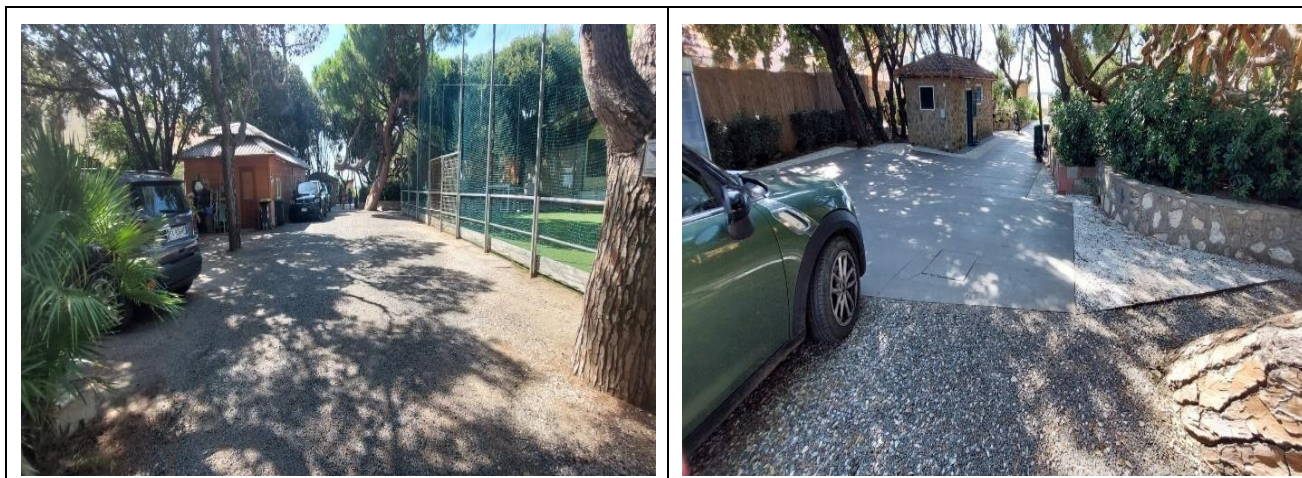
Private/public parking

Presence of private parking	YES
Presence of parking space reserved for people with disabilities	NO
Type of parking surface	GRAVEL
Public parking nearby	NO
	

Pathway from the parking lot to the main entrance

Pathway from the car park to the entrance	Flat
There are markers and tactile maps	YES
Usable door/entrance width	more than 90 cm





Reception

Umbrella booking system	<input type="checkbox"/> Via web <input checked="" type="checkbox"/> By phone <input checked="" type="checkbox"/> On-site
Presence of multilingual staff	YES
Presence of plant plan with key to services available	NO
Presence of visuo-tactile map	NO
Bulletin board/information panels at an average height of 130 cm in a well-lit area and font size at least 14 dpi with a contrast ratio greater than 4.5:1	NO
The staff attended training courses on welcoming people with different disabilities	NO





Bar/restaurant

Type of venue	Bar/restaurant
Access to the premises	via ramp length 17 m, width 125 cm, gradient 14 %
Usable door/entrance width	more than 90 cm
Bar counter	height greater than 100 cm
Types of tables	4-legged
Space underneath the tables from the floor	more than 70 cm
Multilingual menu	YES
Menus with large print fonts	NO
Braille menu	NO
Table service for people with disabilities	YES
Availability of gluten-free food	<input type="checkbox"/> bread <input type="checkbox"/> pasta <input type="checkbox"/> biscuits <input type="checkbox"/> ice cream <input checked="" type="checkbox"/> Pre-packaged foods



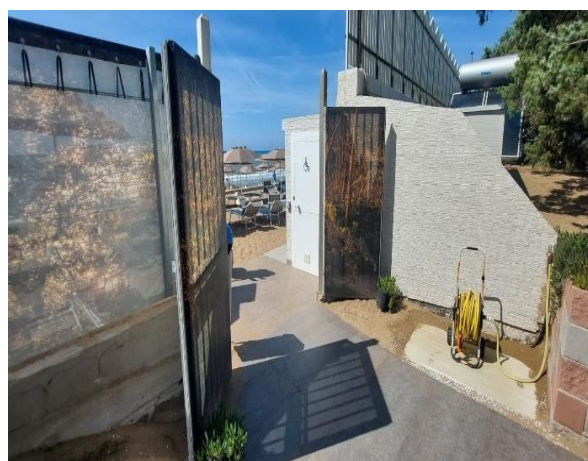


Internal Pathways and common services

Internal Pathways

Indicate whether the pathways connecting the entrance to the beach are flat or with ramps in addition to those already described

flat paths with a ramp 15 m long and a width of more than 100 cm with a gradient of 4 %





Toilet and shower accessible to guests with reduced mobility

Number of toilets accessible/usable by guests with reduced mobility	1
Access to the premises	Flat
Usable width of the entrance door	more than 90 cm
Toilet height	50 cm
Open front toilet seat	YES
Support handles	to the right of the toilet
Flexible hand shower at the side of the toilet	YES
Free space on the sides of the toilet	left 29 cm right Cm frontal more than 90 cm
Electric doorbell/phone	YES
Washbasin with space underneath for wheelchair	67 cm
Height from the ground on the bottom edge of the mirror	Sufficient for use by wheelchair users
Baby changing table	YES





<p>Accessible shower available for guests with reduced mobility</p>	<p>YES outdoors without canopy and an indoor shower (not detected for logistical reasons)</p>
<p>Access to the shower room if separated from the toilet room</p>	<p>by ramp length 550 cm, width greater than 90 cm, slope 5%</p>
<p>Useful width of the door/entrance gate if separated from the toilet room</p>	<p>more than 90 cm</p>
<p>Shower type</p>	<p>open-type</p>
<p>Floor-level shower</p>	<p>YES</p>
<p>Shower chair</p>	<p>missing</p>
<p>Grab bar</p>	<p>NO</p>
<p>Presence of shower head or ups and downs</p>	<p>fixed shower head</p>
<p>Electric doorbell/phone</p>	<p>NO</p>





Changing room and closed shower

Changing rooms available for guests with reduced mobility	YES
Access to the premises	Flat
Usable door/entrance width	more than 90 cm
Size of the dressing room	sufficient for wheelchair manoeuvring
Presence of a cot	YES
Coat rack height from the ground	less than 140 cm and can be used by people in wheelchairs

Beach

Type of beach	sand
Access to the beach	Flat
Walkway to reach the umbrellas	YES
Type of walkway	wooden
Walkway width	OTHER





<p>Removable Platform between the walkway and the umbrella station to facilitate the passage and parking wheelchair</p>	<p>YES</p>
<p>Amphibious beach chair available for helping people with reduced mobility to enjoy swimming (owned by the establishment or by association)</p>	<p>YES</p>

Children's play area

<p>Children's play area</p>	<p>inaccessible to children with reduced mobility due to the presence of steps</p>
<p>There are games for children with reduced mobility</p>	<p>NO</p>

Swimming pool

<p>The property has a swimming pool</p>	<p>NO</p>
---	-----------

Doctors' Offices/Healthcare Facilities



Project promoted by



Regione Toscana

Hospitals near the facility	Ospedale Villamarina Piombino Tel 0565 67111- Via Carlo Forlanini, 2 a 20 km Cecina Hospital tel. 0586 614111 via Montanara 52/b at 29 km
Other Healthcare Facilities	Asl Health District. Piazza Giovanni XXIII San Vincenzo Dialysis Service on Holiday at Villamarina Piombino Hospital tel. 0565 67283 Via Carlo Forlanini, 2 nefrologia.piombino@uslnordovest.toscana.it

TESTED BY: Handy Superabile Social Promotion Association in summer 2023

Project carried out with the contribution of the



**Presidenza del
Consiglio dei Ministri**
Ministro per la disabilità